



future families

A multiagency approach to GIRFEC – delivering effectively in partnership

Natalie Phillips (Clyde Gateway)

Ann-Marie Burns (Glasgow Life)

Transforming the Past: Fit for the Future



Changing Environment 2007 - 2014



- Our social and economic indicators remain amongst the worst in Scotland
- % total population income deprived:
 - 34% in Clyde Gateway
 - 21% in Glasgow
 - 13% in Scotland
- % adults with no qualifications:
 - 46% in Clyde Gateway
 - 32% in Glasgow
 - 26.8% in Scotland
- % school leavers going into higher education from school:
 - 17% in Clyde Gateway
 - 33.1% in Glasgow
 - 36.5% in Scotland
- Rates of emergency hospital admissions per 100,000 population:
 - 15,898 in Clyde Gateway
 - 11,711 in Glasgow
 - 10,194 in Scotland



libraries

Investing in Change



To secure unparalleled social, economic and physical change with investment in:

- 10, 000 new homes
- 400, 000 sq m of new business space
- 20, 000 new jobs
- 20, 000 population increase by dealing with the damaging legacy of poverty, contamination and decay across 840 hectares of inner-city; a third of which had lain derelict for decades

Child Poverty and Social Mobility

Key parenting skills developed in a national parenting programme:

- Reading
- Responding
- Talking
- Playing
- Sharing

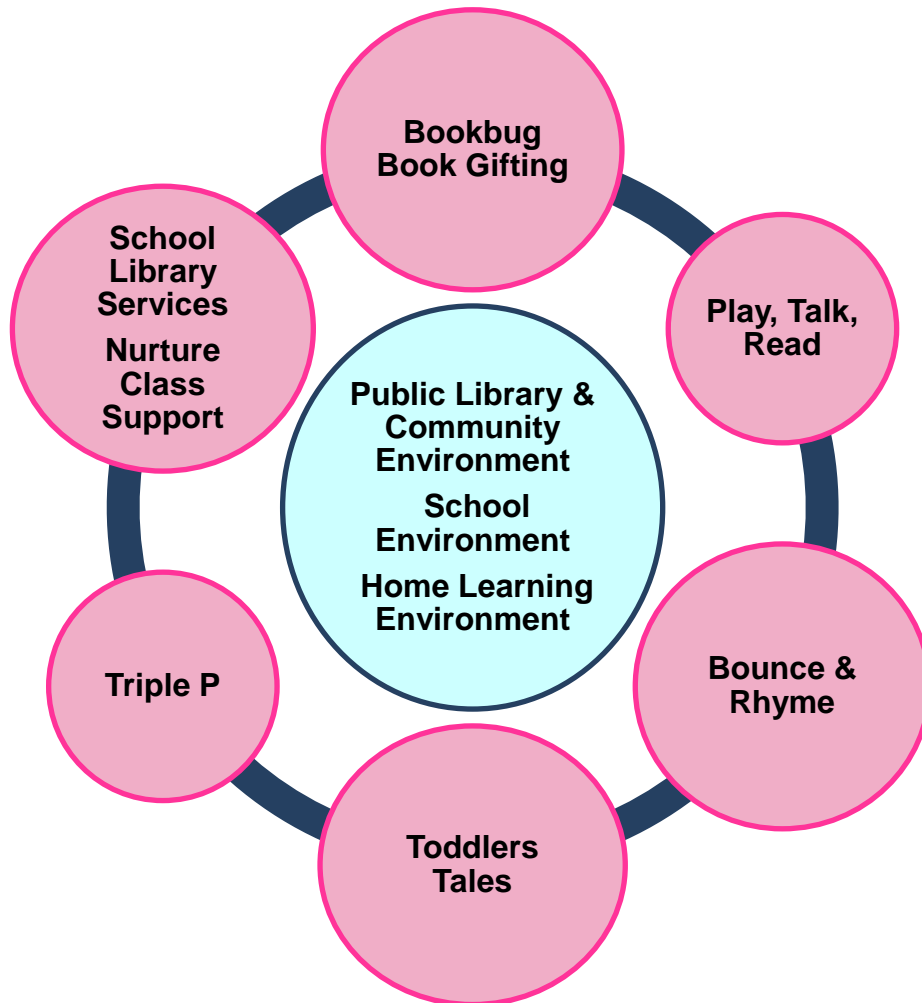
Those with a low level of educational attainment are 4x as likely to be in poverty than those with a high level

Education and attainment the means to move out of poverty?

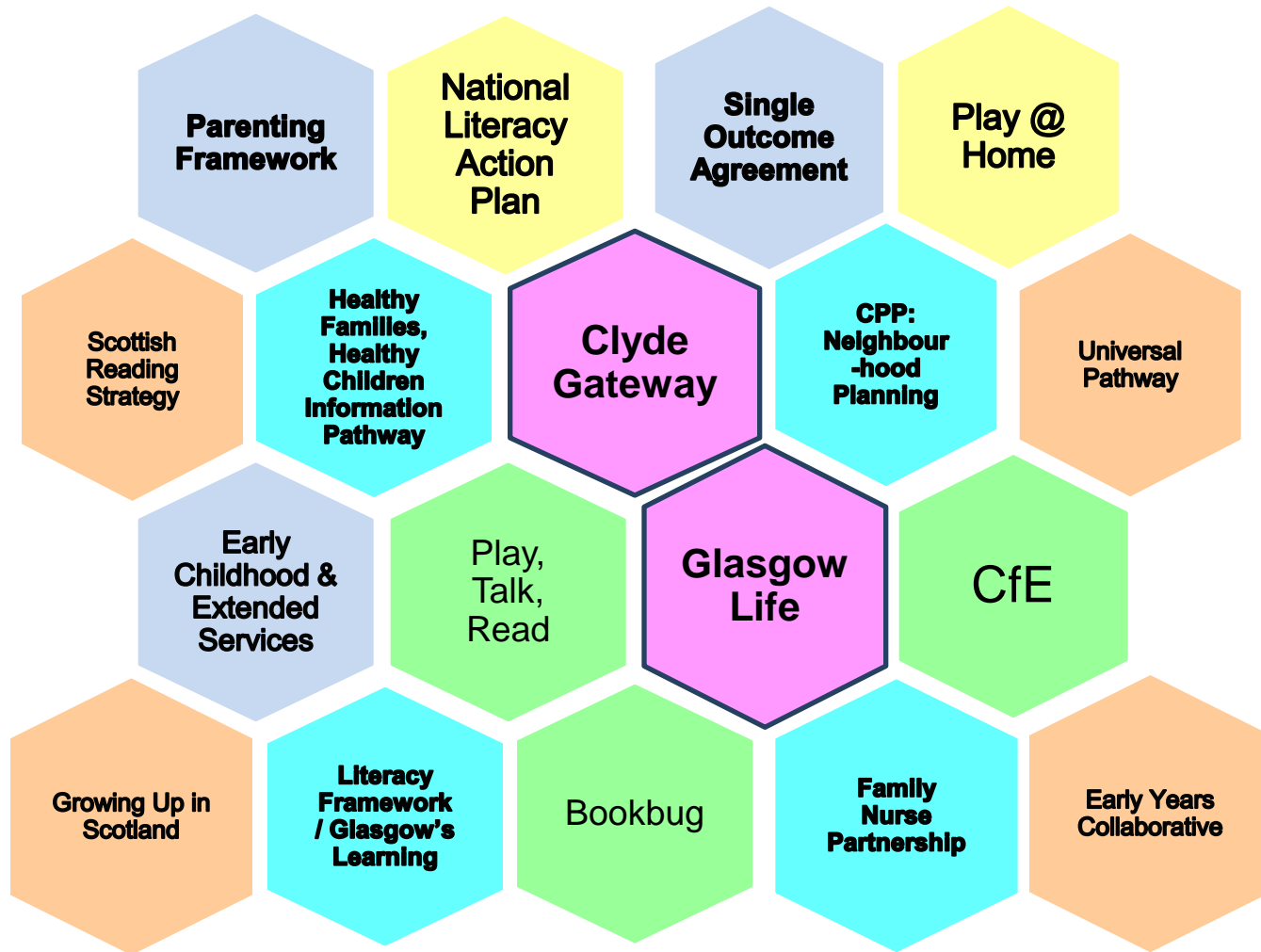
Foundation setting in the Early Years to support:

- Developmental milestones
- Family resilience
- Family learning
- Longer term attainment
- Aspiration
- Improved Health and Wellbeing
 - Reducing health inequality

Early Intervention in the Early Years



Collaborative Approach



So What?



- Reading to very young children on a regular basis not only provides a good preparation for formal education, it also has protective effects on their health and wellbeing
- Kelly *et al.* (2011) estimated that if all the three-year olds in the UK currently read to on a less than weekly basis were read to daily, this would reduce the percentage with social or emotional difficulties at age five by a fifth



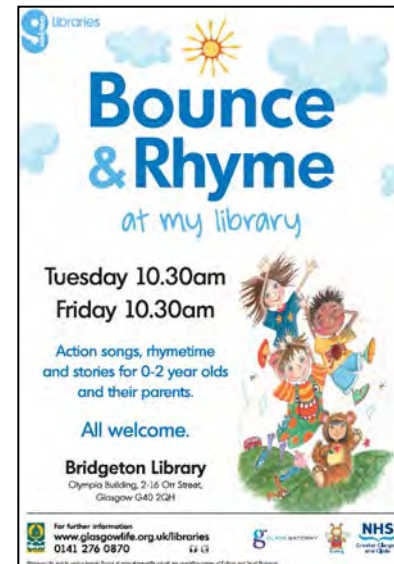
Bookbug Baby

Packs are usually gifted to parents when their babies are around 6 – 16 weeks, by the health visitor or through their local library



Bounce & Rhyme

- Improve children’s literacy, numeracy, and communication skills
- Assist understanding of child development
- Promote parenting skills and prevent social isolation of parents



Bounce & Rhyme
at my library




Tuesday 10.30am
Friday 10.30am

Action songs, rhymetime and stories for 0-2 year olds and their parents.

All welcome.

Bridgeton Library
Olympia Building, 2-16 Orr Street,
Glasgow G40 2QH

For further information:
www.glasgowlife.org.uk/libraries
0141 276 0870

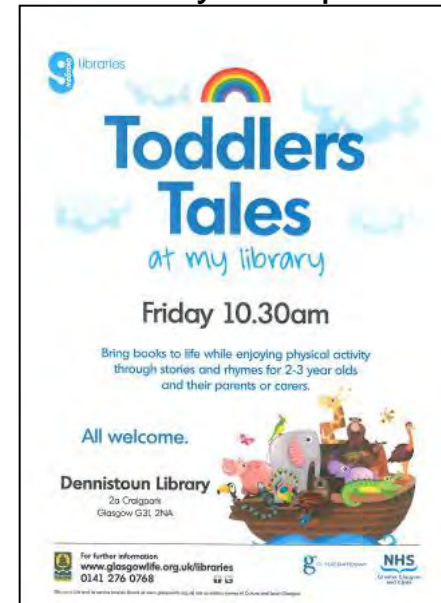
Bookbug Toddler

Packs are usually gifted to parents when the child is aged between 1-2 years by the health visitor or through their local library



Toddlers Tales

- Improve children’s literacy, numeracy, and communication skills
- Assist understanding of child development
- Promote parenting skills and prevent social isolation of parents
- Physical activity incorporated





Bookbug Pirate

Pack is usually given out at nursery when your child turns 3 or through their local library



Play & Share

- Building on Bounce & Rhyme and Toddlers Tales using books and play to bring sessions alive through fun activities
- Supports Play @ Home initiative
- Promote parenting skills and prevent social isolation of parents



Play & Share

Have fun helping your child learn through lots of play activities.
For children 3-5 years and their parents and carers.

Thursday 10.30am–12.30pm

Parkhead Library
64 Tallcross Road, Glasgow G31 4XA

For further information:
www.glasgowlife.org.uk/libraries
0141 276 1530

Glasgow Life and its services are funded by Glasgow City Council and Glasgow Life. Glasgow Life is a service brand. For more information visit www.glasgowlife.org.uk or contact Glasgow Life on 0141 276 1530.

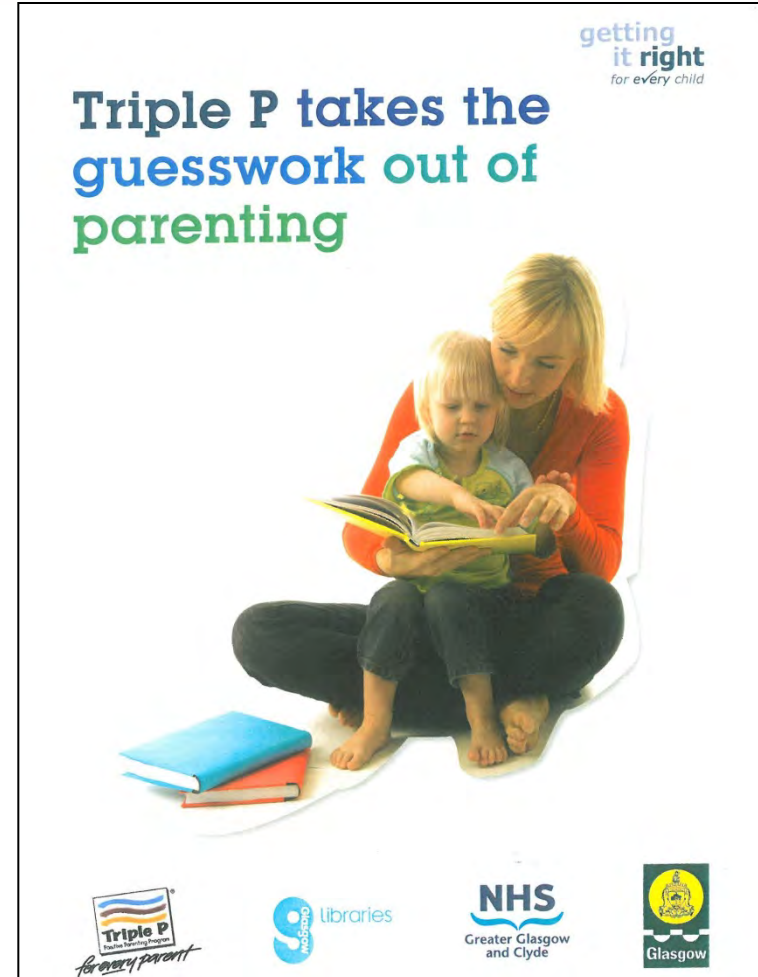


Triple P

Positive Parenting Programme is designed to provide parents with the necessary information and skills to practice strategies within their own families

NHS Greater Glasgow & Clyde are lead partners and formally adopted Triple-P as City Parenting Framework


Glasgow Life Practitioners deliver sessions jointly with health partners in library settings




getting it right for every child

Triple P takes the guesswork out of parenting


Triple P
Positive Parenting Programme
for every parent



libraries

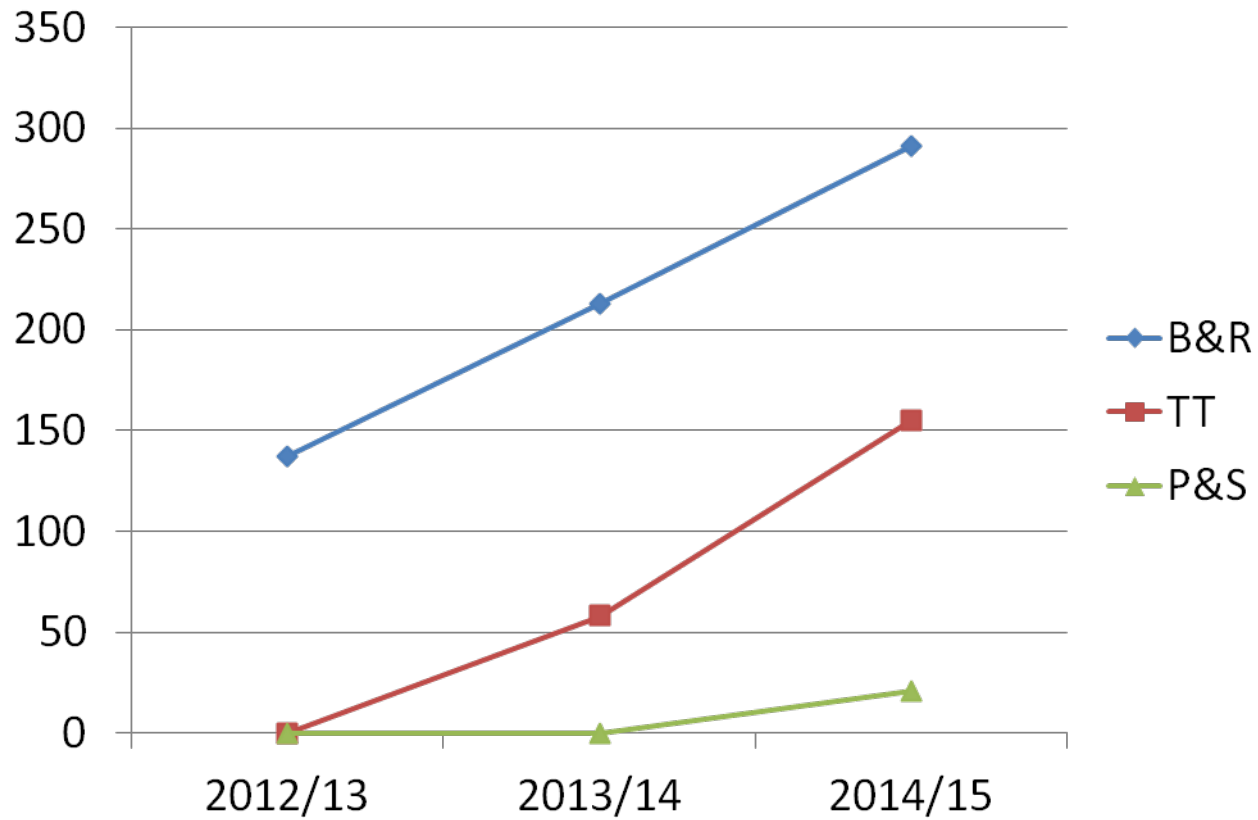


NHS
Greater Glasgow and Clyde

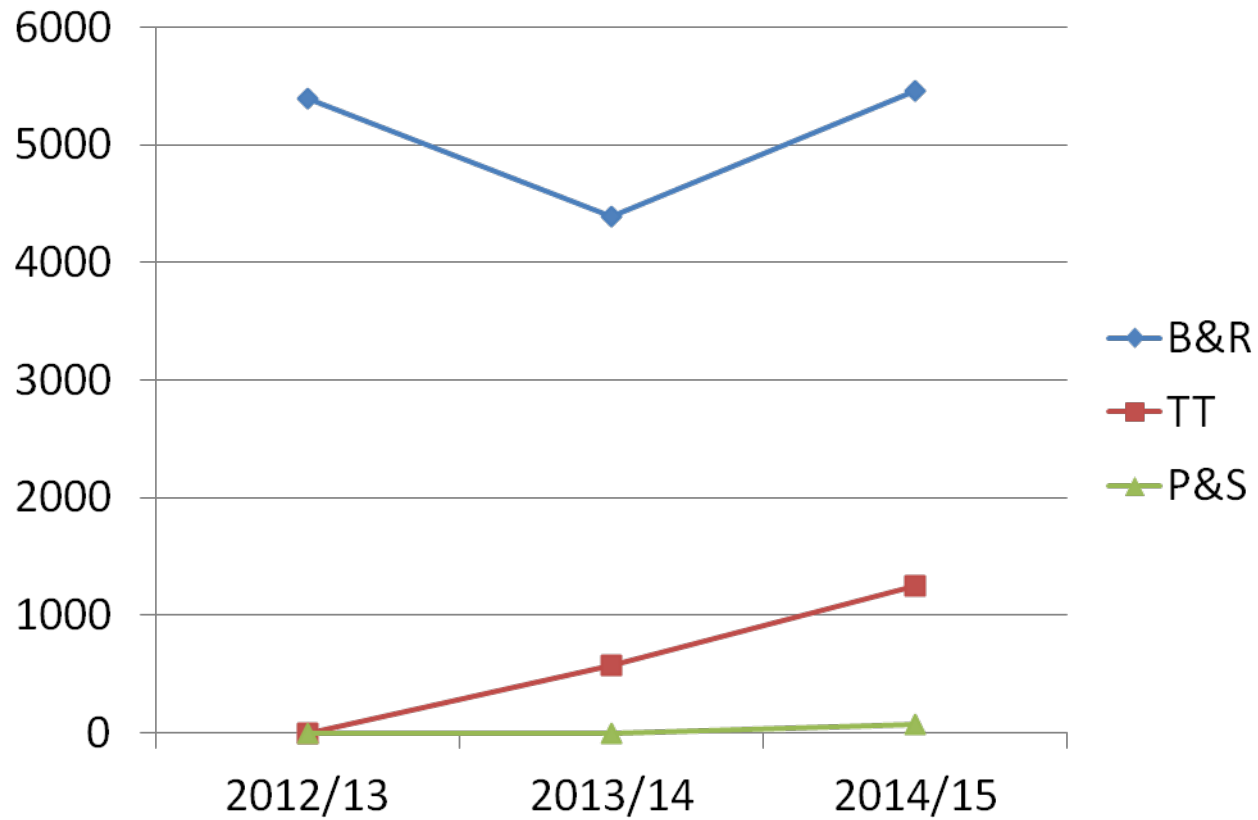


Glasgow

Session Delivery



Session Attendance



Outreach, Engagement & Quality

LINKING OPPORTUNITY AND NEED (LOAN)

- Our opportunities (physical/non physical) match the need of our community and the economic statistics of our community
- We seek to continue to make real differences to people's lives and that they experience legacy and social justice that is truly world-class
- Collaboration and LOAN are continual

STAKEHOLDER ENGAGEMENT

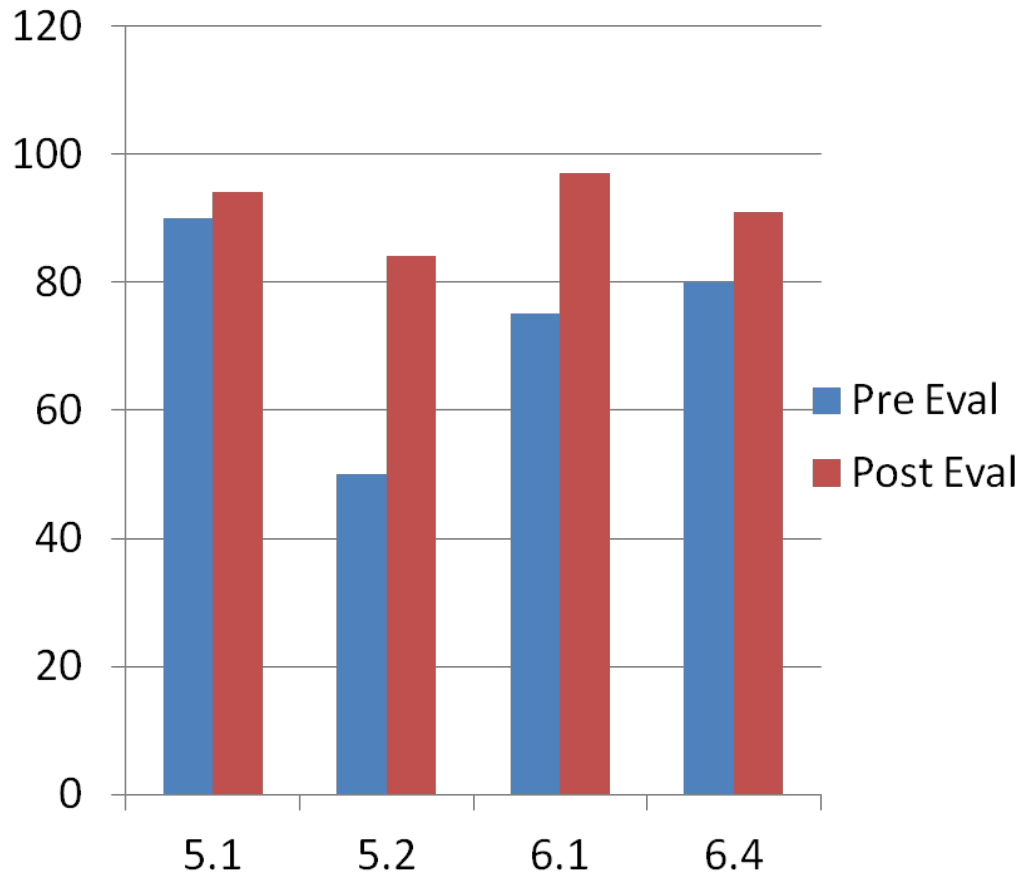
- Partnership agreement for targeted link up supporting LOAN in spaces out with library network
- Established partners provided with opportunity to engage with our audiences

QUALITY

- Customised training award SQA progressing towards credit rating
- Practice development network

Realised Benefits

2014/15 Data



5.1 I read and sing more to my child after attending Bounce & Rhyme

5.2 I currently Find it easy to meet other people

6.1 Sharing books and rhymes at this session has increased my confidence to read/sing more at home

6.4 Made friends with other parents

Realised Benefits

Firm & fantastic partnership tackling social exclusion, parenting education in a focused and targeted manner

3 x Clyde Gateway residents successful in recruitment for positions

5 positions supporting project expansion advertised locally & city wide, 2 new posts including outreach worker introduced

Training and Upskilling for existing Library & Community staff within Glasgow Life to support sustainability

Looking to the Future

PROJECT EXPANSION

- Wee Play
- Expansion of catchment within the Clyde Gateway area
- Every Child A Library Member
- Increased outreach & engagement

FURTHER EVALUATION

- Commissioning of evaluation
 - Small tests of change
 - Family tracking
- Case Studies

ADVOCACY

- Testimonial film
 - Families
 - Partners/Stakeholders
- Articulation/dissemination of evaluation findings

SUSTAINABILITY

- Learning and employability offer
 - SQA award
- Capacity Building
- Wider Regeneration



www.glasgowlife.org.uk/policy-research/future-families-project/

www.clydegateway.com